



# SIKA FENESTRATION SYSTEMS STRUCTURAL GLASS BONDING

BUILDING TRUST





# THE BONDED WINDOW – A HIGH-TECH ELEMENT

**THE ARCHITECTURE AND FUNCTION OF A BUILDING** is primarily determined by the design and the technology of the building envelope. Worldwide, the increasing requirements to energy efficiency and a reasonable utilization of natural resources essentially influence the development of facades and windows. Modern international market requirements for more transparency and more functionality request innovative and economically convincing solutions.

The use of glass as a reinforcing element in window construction using the latest bonding techniques is based on our 30 years' experience in the vehicle and facade markets. Our experience is proven by several million successfully bonded windows.

The complexity of the window market requires a close and specific cooperation between you, your key suppliers and us as your specialist for adhesives and their application in the window fabrication.

## ADVANTAGES OF BONDING TECHNOLOGY

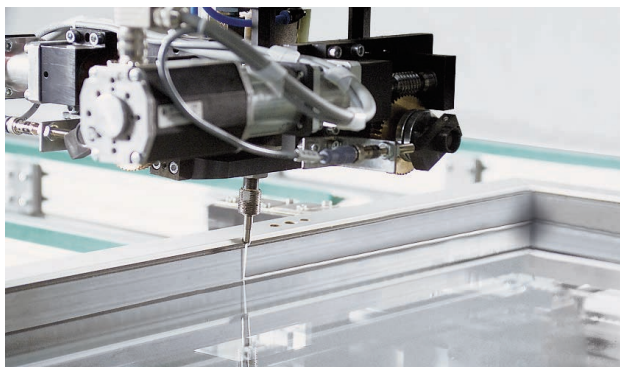
- Improvement of thermal insulation up to 20 %
- Up to 30 % more light
- Dynamic load:
  - Increase of approved wind load up to 10 %
- Reduction of production costs up to 10 %
- Reduction of service costs up to 90 %
- Up to 90 % lower complaint rate



Picture left page:  
Turning Torso, Malmö, Sweden

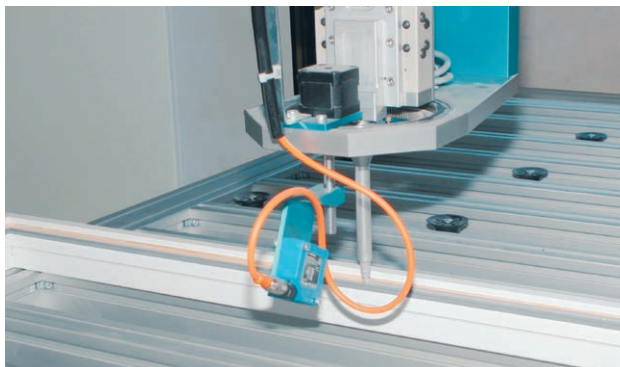
# LEVEL OF AUTOMATISATION IN WINDOW BONDING

## FULLY AUTOMATED



- Automated infeed and outfeed of sash frame
- Automated marriage of sash frame and IG unit
- Automated application of adhesive with 1-part or 2-part pump and mixing system

## SEMI-AUTOMATIC



- Manual or automated infeed and outfeed of sash frame and IG unit
- Automated application of adhesive with 1-part or 2-part pump and mixing system

## MANUAL

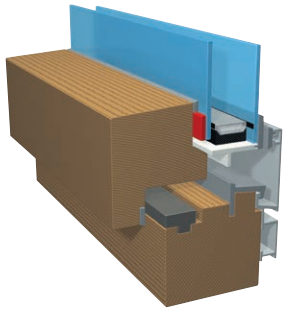


- Manual marriage of sash frame and IG unit
- Manual application of 1-part and 2-part adhesive with gun or pump and mixing system

## SIKA – THE FULL RANGE SUPPLIER

Sika's approach to sealing and bonding is to provide the right product solution for each individual application. As the requirements for adhesives differ depending on the customer's needs and requirements, Sika focuses on an intensive customer relationship already at the early stage of the project. This includes extensive support in design of adhesive joints, the right adhesive selection and finally the optimisation of application processes. For hand and automated applications the Sika materials are available in 300 ml cartridges, 600 ml unipacks, 23 L pails and 200 L drums. Our core technologies are based on polyurethanes, SB polymers, silicone, acrylates and hotmelts.

# THE IDEAL ADHESIVE FOR WOOD WINDOWS



## INTERIOR OVERLAP BONDING

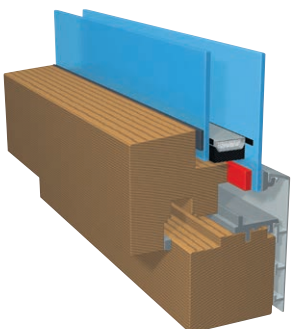
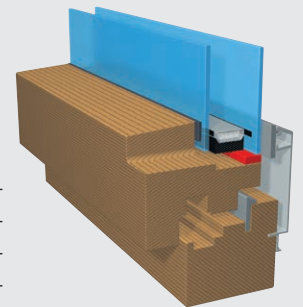
- Greatest potential for saving frame material
- Maximum glass area
- Improved thermal insulation
- Reduction of production costs

| PRODUCT                  | TECHNOLOGY                     | CHARACTERISTICS                               |
|--------------------------|--------------------------------|---|
| Sikasil® WT-485          | 2 part Silicone, UV-resistant  | High curing speed for automated application   |
| Sikasil® WT-480          | 2 part Silicone, UV-resistant  | High modulus, long mixer open time            |
| Sikasil® WT-470          | 2 part Silicone, UV-resistant  | Highly flexible, medium curing speed          |
| Sikasil® WT-66 PowerCure | 1 part Silicone, accelerated   | High strength at high elongation              |
| SikaFast® 5000 series    | 2 part Acrylates, UV-resistant | Extremely high modulus, extremely fast curing |

## GLASS EDGE BONDING

- Improved thermal insulation
- Maximal acceleration of glazing speed with almost unchanged production process

| PRODUCT                   | TECHNOLOGY                          | CHARACTERISTICS                             |
|---------------------------|-------------------------------------|---|
| Sikasil® WT-485           | 2 part Silicone, UV-resistant       | High curing speed for automated application |
| Sikasil® WT-480           | 2 part Silicone, UV-resistant       | High modulus, long mixer open time          |
| Sikasil® WT-470           | 2 part Silicone, UV-resistant       | Highly flexible, medium curing speed        |
| Sikasil® WT-40            | 1 part Silicone, UV-resistant       | Easy to apply                               |
| Sikasil® WT-66 PowerCure  | 1 part Silicone, accelerated        | High strength at high elongation            |
| Sika® Glazing Tape Prefix | Acrylic adhesive tape, UV-resistant | Immediate fixation of glass                 |

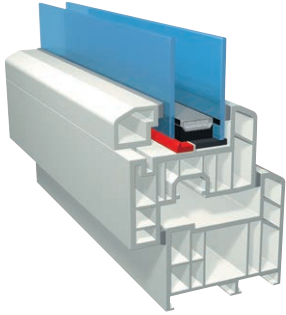


## STEPPED INSULATING GLASS

- Great potential for saving frame material
- Maximum glass area
- Improved thermal insulation

| PRODUCT                   | TECHNOLOGY                          | CHARACTERISTICS                             |
|---------------------------|-------------------------------------|---|
| Sikasil® WT-485           | 2 part Silicone, UV-resistant       | High curing speed for automated application |
| Sikasil® WT-480           | 2 part Silicone, UV-resistant       | High modulus, long mixer open time          |
| Sikasil® WT-470           | 2 part Silicone, UV-resistant       | Highly flexible, medium curing speed        |
| Sikasil® WT-40            | 1 part Silicone, UV-resistant       | Easy to apply                               |
| Sikasil® WT-66 PowerCure  | 1 part Silicone, accelerated        | High strength at high elongation            |
| Sika® Glazing Tape Prefix | Acrylic adhesive tape, UV-resistant | Immediate fixation of glass                 |

# THE IDEAL ADHESIVE FOR PVC WINDOWS



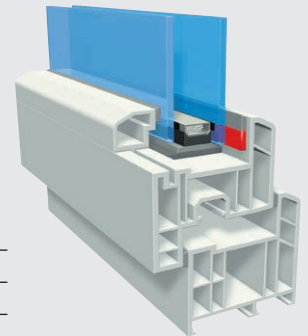
## GLASS EDGE BONDING

- Improved thermal insulation
- Maximal acceleration of glazing speed with almost unchanged production process

| PRODUCT                  | TECHNOLOGY                    | CHARACTERISTICS                             |
|--------------------------|-------------------------------|---|
| Sikasil® WT-485          | 2 part Silicone, UV-resistant | High curing speed for automated application |
| Sikasil® WT-480          | 2 part Silicone, UV-resistant | High modulus, long mixer open time          |
| Sikasil® WT-470          | 2 part Silicone, UV-resistant | Highly flexible, medium curing speed        |
| Sikasil® WT-66 PowerCure | 1 part Silicone, accelerated  | High strength at high elongation            |

## EXTERIOR OVERLAP BONDING

- Easiest start of window bonding
- Reduction of service costs
- Reduction of complaint rate
- Flexibility of product portfolio

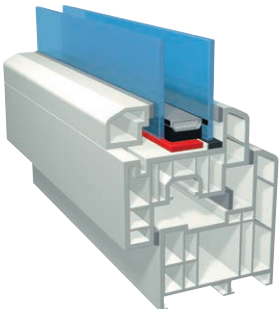


| PRODUCT                  | TECHNOLOGY                    | CHARACTERISTICS                             |
|--------------------------|-------------------------------|---|
| Sikasil® WT-485          | 2 part Silicone, UV-resistant | High curing speed for automated application |
| Sikasil® WT-480          | 2 part Silicone, UV-resistant | High modulus, long mixer open time          |
| Sikasil® WT-470          | 2 part Silicone, UV-resistant | Highly flexible, medium curing speed        |
| Sikasil® WT-66 PowerCure | 1 part Silicone, accelerated  | High strength at high elongation            |

## REBATE BONDING

- Improved thermal insulation
- Maximal acceleration of glazing speed with almost unchanged production process

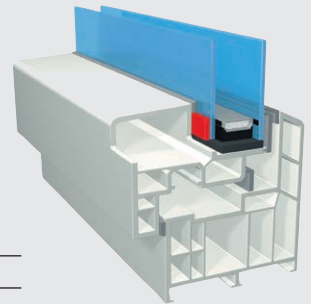
| PRODUCT                  | TECHNOLOGY                    | CHARACTERISTICS                             |
|--------------------------|-------------------------------|---|
| Sikasil® WT-485          | 2 part Silicone, UV-resistant | High curing speed for automated application |
| Sikasil® WT-480          | 2 part Silicone, UV-resistant | High modulus, long mixer open time          |
| Sikasil® WT-470          | 2 part Silicone, UV-resistant | Highly flexible, medium curing speed        |
| Sikasil® WT-66 PowerCure | 1 part Silicone, accelerated  | High strength at high elongation            |





## INTERIOR OVERLAP BONDING

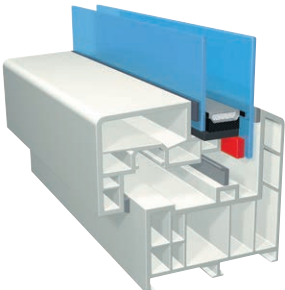
- Greatest potential for saving frame material
- Maximum glass area
- Improved thermal insulation
- Reduction of production costs



| PRODUCT                   | TECHNOLOGY                          | CHARACTERISTICS                             |
|---------------------------|-------------------------------------|---|
| Sikasil® WT-485           | 2 part Silicone, UV-resistant       | High curing speed for automated application |
| Sikasil® WT-480           | 2 part Silicone, UV-resistant       | High modulus, long mixer open time          |
| Sikasil® WT-470           | 2 part Silicone, UV-resistant       | Highly flexible, medium curing speed        |
| Sikasil® WT-66 PowerCure  | 1 part Silicone, accelerated        | High strength at high elongation            |
| Sika® Glazing Tape Prefix | Acrylic adhesive tape, UV-resistant | Immediate fixation of glass                 |

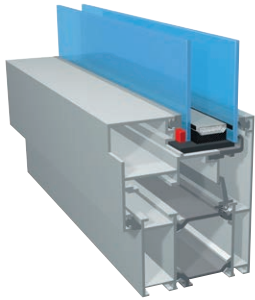
## STEPPED INSULATING GLASS

- Great potential for saving frame material
- Maximum glass area
- Improved thermal insulation



| PRODUCT                   | TECHNOLOGY                          | CHARACTERISTICS                             |
|---------------------------|-------------------------------------|---|
| Sikasil® WT-485           | 2 part Silicone, UV-resistant       | High curing speed for automated application |
| Sikasil® WT-480           | 2 part Silicone, UV-resistant       | High modulus, long mixer open time          |
| Sikasil® WT-470           | 2 part Silicone, UV-resistant       | Highly flexible, medium curing speed        |
| Sikasil® WT-40            | 1 part Silicone, UV-resistant       | Easy to apply                               |
| Sikasil® WT-66 PowerCure  | 1 part Silicone, accelerated        | High strength at high elongation            |
| Sika® Glazing Tape Prefix | Acrylic adhesive tape, UV-resistant | Immediate fixation of glass                 |

# THE IDEAL ADHESIVE FOR ALUMINUM WINDOWS



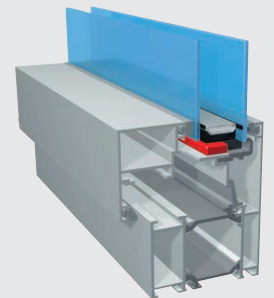
## INTERIOR OVERLAP BONDING

- Greatest potential for saving frame material
- Reduction or elimination of thermal break material
- Improvement of thermal insulation
- Maximum glass area
- Reduction of production costs

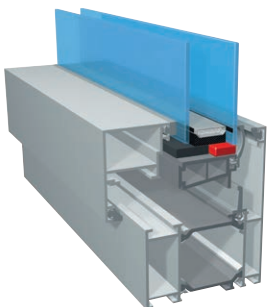
| PRODUCT                   | TECHNOLOGY                          | CHARACTERISTICS                             |
|---------------------------|-------------------------------------|---|
| Sikasil® WT-485           | 2 part Silicone, UV-resistant       | High curing speed for automated application |
| Sikasil® WT-480           | 2 part Silicone, UV-resistant       | High modulus, long mixer open time          |
| Sikasil® WT-470           | 2 part Silicone, UV-resistant       | Highly flexible, medium curing speed        |
| Sikasil® WT-66 PowerCure  | 1 part Silicone, accelerated        | High strength at high elongation            |
| Sika® Glazing Tape Prefix | Acrylic adhesive tape, UV-resistant | Immediate fixation of glass                 |

## INTERIOR GLASS EDGE BONDING

- Saving of frame material
- Reduction or elimination of thermal break material
- Maximum glass area
- Improved thermal insulation
- Maximum acceleration of glazing speed
- Reduction of production cost



| PRODUCT                   | TECHNOLOGY                          | CHARACTERISTICS                             |
|---------------------------|-------------------------------------|---|
| Sikasil® WT-485           | 2 part Silicone, UV-resistant       | High curing speed for automated application |
| Sikasil® WT-480           | 2 part Silicone, UV-resistant       | High modulus, long mixer open time          |
| Sikasil® WT-470           | 2 part Silicone, UV-resistant       | Highly flexible, medium curing speed        |
| Sikasil® WT-66 PowerCure  | 1 part Silicone, accelerated        | High strength at high elongation            |
| Sika® Glazing Tape Prefix | Acrylic adhesive tape, UV-resistant | Immediate fixation of glass                 |



## GLASS EDGE BONDING EXTERIOR

- Saving of frame material
- Maximum glass area
- Improved thermal insulation
- Maximum acceleration of glazing speed
- Reduction of production cost

| PRODUCT                   | TECHNOLOGY                          | CHARACTERISTICS                             |
|---------------------------|-------------------------------------|---|
| Sikasil® WT-485           | 2 part Silicone, UV-resistant       | High curing speed for automated application |
| Sikasil® WT-480           | 2 part Silicone, UV-resistant       | High modulus, long mixer open time          |
| Sikasil® WT-470           | 2 part Silicone, UV-resistant       | Highly flexible, medium curing speed        |
| Sikasil® WT-40            | 1 part Silicone, UV-resistant       | Easy to apply                               |
| Sikasil® WT-66 PowerCure  | 1 part Silicone, accelerated        | High strength at high elongation            |
| Sika® Glazing Tape Prefix | Acrylic adhesive tape, UV-resistant | Immediate fixation of glass                 |

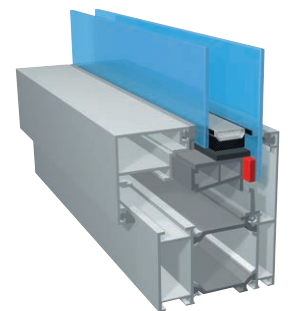




## STEPPED INSULATING GLASS

- Saving of frame material
- Maximum glass area
- Excellent thermal insulation
- Reduction of production cost

| PRODUCT                   | TECHNOLOGY                          | CHARACTERISTICS                             |
|---------------------------|-------------------------------------|---|
| Sikasil® WT-485           | 2 part Silicone, UV-resistant       | High curing speed for automated application |
| Sikasil® WT-480           | 2 part Silicone, UV-resistant       | High modulus, long mixer open time          |
| Sikasil® WT-470           | 2 part Silicone, UV-resistant       | Highly flexible, medium curing speed        |
| Sikasil® WT-40            | 1 part Silicone, UV-resistant       | Easy to apply                               |
| Sikasil® WT-66 PowerCure  | 1 part Silicone, accelerated        | High strength at high elongation            |
| Sika® Glazing Tape Prefix | Acrylic adhesive tape, UV-resistant | Immediate fixation of glass                 |



# OUR PERFORMANCES – YOUR BENEFITS

| Performance                     | Benefit   |
|---------------------------------|---|
| <b>Construction consultancy</b> | <ul style="list-style-type: none"> <li>- Review of existing window systems referring to suitability for bonding</li> <li>- Advice for system amendments</li> </ul>  |
| <b>Functional testing</b>       | <ul style="list-style-type: none"> <li>- Support with prototyping</li> <li>- Functional tests/test plan of whole system for compatibility, adhesion and function</li> </ul>   |
| <b>Application technology</b>   | <ul style="list-style-type: none"> <li>- Active consulting with the selection of application technology</li> <li>- Systems and equipment engineering/bonding technology</li> <li>- Support of equipment application procedures</li> </ul> |
| <b>Applicator training</b>      | <ul style="list-style-type: none"> <li>- Preparation of operation manuals for bonding/ repair glazing in conformity with ISO</li> <li>- Customer service</li> </ul>   |
| <b>External approvals</b>       | <ul style="list-style-type: none"> <li>- Best practice sample preparation</li> </ul>  |

## OUR CORE COMPETENCES

Sika is the technology leader in fenestration and offers its customers best practice solutions for bonding, sealing, damping and reinforcing.

Sika's window engineers support the window manufacturers by developing solutions for bonded windows.

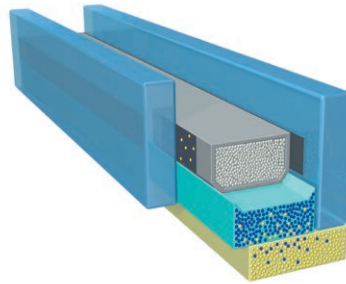
# SIKA COMBINES BONDING TECHNOLOGY WITH WINDOW FABRICATION

## Our Fenestration Competence Centre

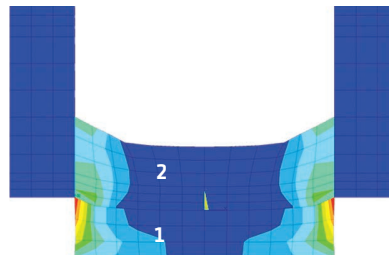
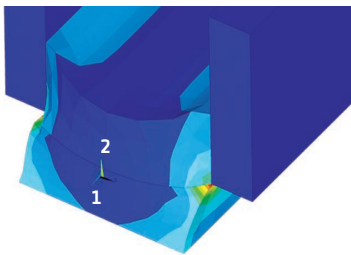
R&D has always taken pride of place at Sika. At our Fenestration Competence Centre in Switzerland, we combine R&D with a very special service: individualized project service and support. This project service is Sika's response to increasing distinctiveness of window technology. Innovative uses of new sealants and adhesives for window constructions are in demand. But there is also a growing need for technical support in project planning and execution. At our Fenestration Competence Centres, we develop new products and processing technologies, test known bonding methods for the applicability in windows, and use the results to optimize our technical service.



Sika System Engineering supports the optimization of the adhesive application by patented test methods. The above image shows an infrared camera measuring the adhesives heat of reaction.



In windows with rebate bonding and glass edge bonding the IG secondary sealant is in direct contact with the window adhesive. Therefore, the adhesive must be compatible with the edge sealant. Sika's sealants and adhesive systems are tested and approved to avoid incompatibility. More information about compatibility of our systems can be found on [ses.sika.com](http://ses.sika.com).



### Rebate bonding

- 1 Window adhesive
- 2 Insulating glass secondary sealant

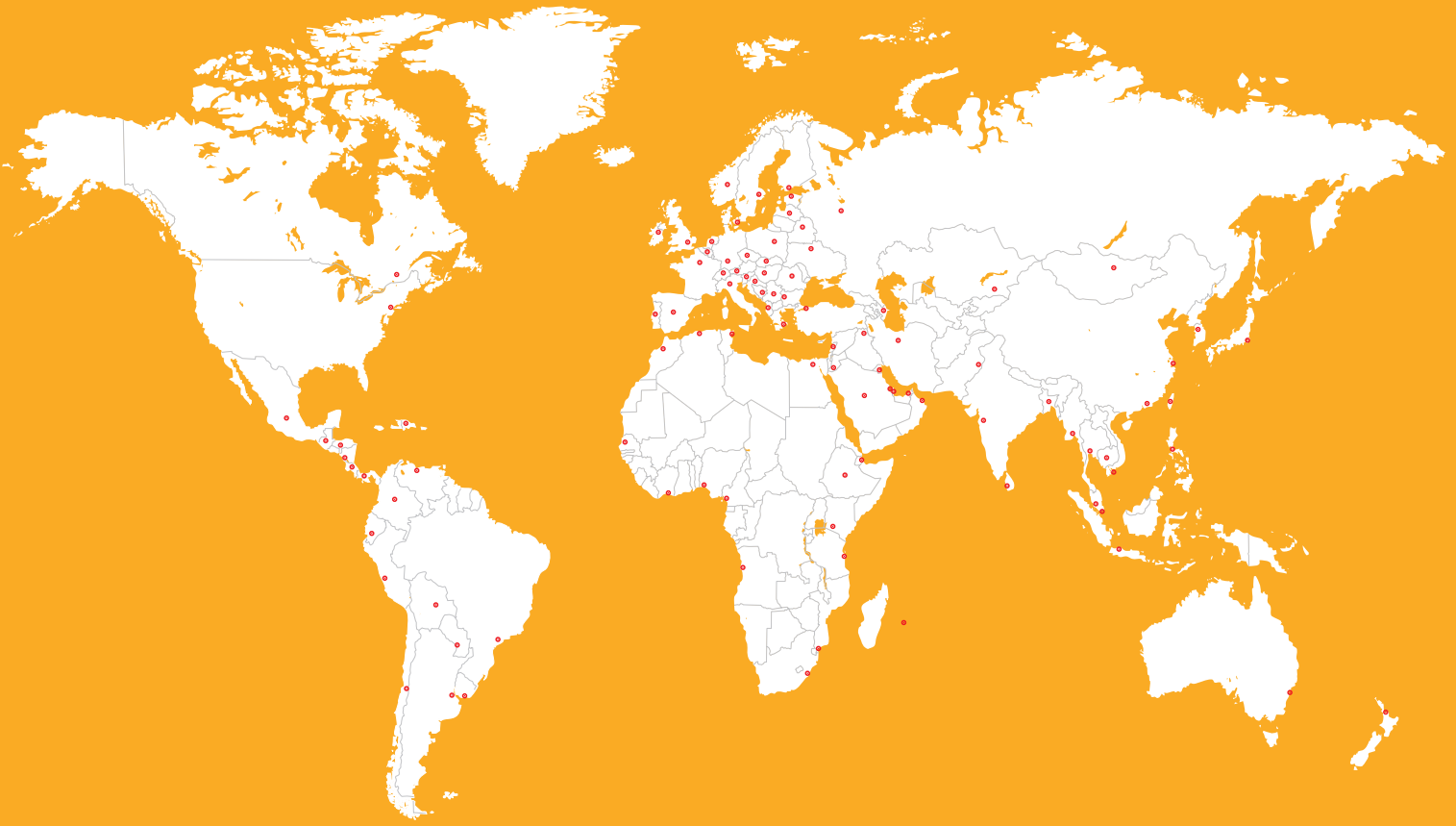
Finite element calculations show the critical points in a construction. The window construction is optimized by the right choice of adhesive and joint geometry.

## GLOBAL PRESENCE – LOCAL SUPPORT

In cooperation with our local technical service centres, the experts in our Fenestration Competence Centre attend to window manufacturers on all continents, from planning to execution. Thereby we focus on the interdisciplinary cooperation with the partners of the glass industry and the profile suppliers.

For individual reports visit our **Sealant Compatibility Check tool** on [www.sika.com/windows](http://www.sika.com/windows)

# GLOBAL BUT LOCAL PARTNERSHIP

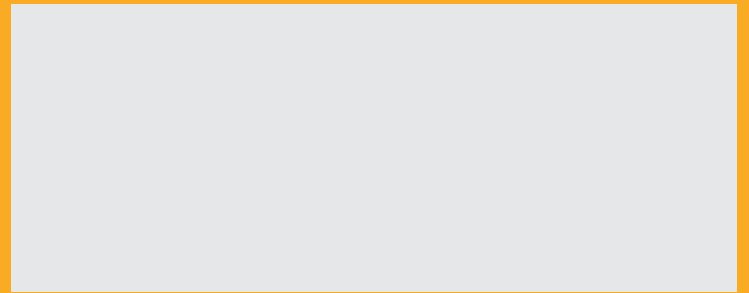


## FOR MORE INFORMATION:



[www.sika.com/facade](http://www.sika.com/facade)

Sika AG, Switzerland, is a globally active specialty chemicals company. Sika supplies the building and construction industry as well as manufacturing industries (automotive, bus, truck, rail, solar and wind power plants, facades). Sika is a leader in processing materials used in sealing, bonding, damping, reinforcing and protecting loadbearing structures. Sika's product lines feature high quality concrete admixtures, specialty mortars, sealants and adhesives, damping and reinforcing materials, structural strengthening systems, industrial flooring as well as roofing and waterproofing systems.



Our most current General Sales Conditions shall apply. Please consult the most current local Product Data Sheet prior to any use.



**SIKA SERVICES AG**  
Tueffenwies 16  
CH-8048 Zurich  
Switzerland

**Contact**  
Phone +41 58 436 40 40  
Fax +41 58 436 55 30  
[www.sika.com/industry](http://www.sika.com/industry)

**BUILDING TRUST**

